



3 Clearview Villas,
Clearview Street, St. Helier, JE2 3YY

Asking price £449,000



NEW TO MARKET - FREEHOLD - Reside are please to offer this fully renovated, brand new two bedroom cottage right in the heart of town.

Every inch of this home has been updated to a high-quality standard, from the brand-new kitchen and integrated appliances to the fresh flooring and elegant lighting throughout. Enjoy the open-plan living space, underfloor heating in the shower room, and built-in wardrobes in both bedrooms.

The main bedroom features a stylish modern feature wall, and with its southwest-facing aspect, you'll get plenty of natural light throughout the home.

Located in a quiet location and just a short walk from all amenities, this home truly lets you feel right at home in a fresh, modern space.

SOLE AGENT - RES366



reside.je



info@reside.je



07797737773



reside.je



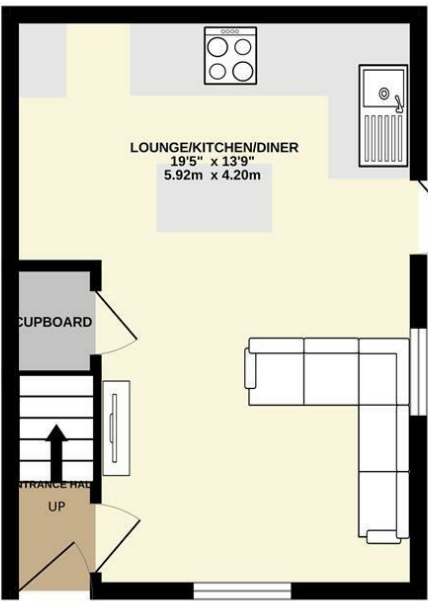
info@reside.je



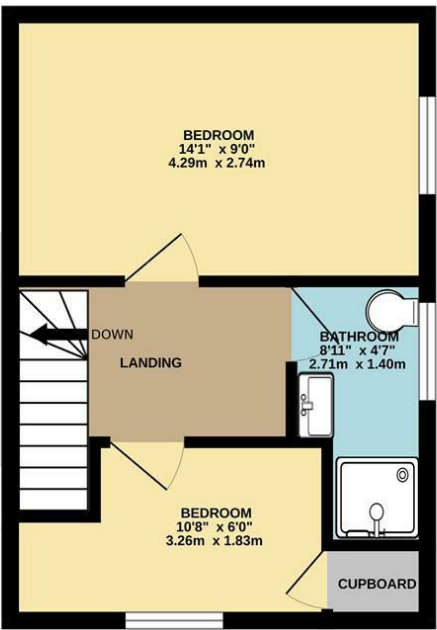
07797737773

Floor Plan

GROUND FLOOR
268 sq.ft. (24.9 sq.m.) approx.



1ST FLOOR
288 sq.ft. (26.7 sq.m.) approx.



TOTAL FLOOR AREA : 555 sq.ft. (51.6 sq.m.) approx.
Whilst every attempt has been made to ensure the accuracy of the floorplan contained here, measurements of doors, windows, rooms and any other items are approximate and no responsibility is taken for any error, omission or mis-statement. This plan is for illustrative purposes only and should be used as such by any prospective purchaser. The services, systems and appliances shown have not been tested and no guarantee as to their operability or efficiency can be given.
Made with Metropix ©2025



reside.je



info@reside.je



07797737773

Key Information

- Fully renovated, brand-new two-bedroom cottage.
- High quality finishes throughout, including a new kitchen and appliances.
- Open plan living space for a modern feel.
- Underfloor heating in the shower room.
- Built-in wardrobes in both bedrooms.
- Modern feature wall in the main bedroom.
- Southwest facing aspect allowing plenty of natural light throughout.
- Town location, within walking distance to local amenities.

Directions

